

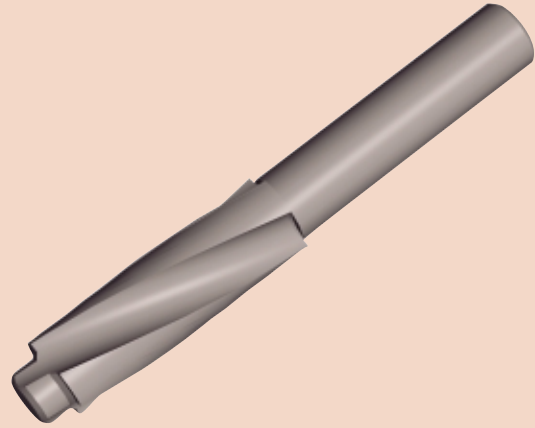
Counterbores For Ejector Pins

DMS "Ejector Pin" Counterbores are made from the finest quality High Speed Steel available. They are ground from solid pre-hardened steel to exact tolerances and specifications. The three flute design gives rigid performance and maximum chip clearance. A built-in chamfer allows clearance for the radius under the ejector pin head and provides proper seating of the pin.

COUNTERBORE SET

Counterbores are available in a set of 7 of the most popular sizes ($\frac{1}{8}$, $\frac{9}{64}$, $\frac{5}{32}$, $\frac{11}{64}$, $\frac{3}{16}$, $\frac{13}{64}$, $\frac{1}{4}$) at additional savings. Supplied with wooden block.

CATALOG NUMBER
CB-SET



| Catalog Number | Ej. Pin Diameter | C'Bore Body Dia. | Pilot Length | Shank Diameter | Overall Length |
|----------------|------------------|------------------|--------------|----------------|----------------|
| CB-12 | 1/8 | 17/64 | 3/16 | 1/4 | 2-5/8 |
| CB-14 | 9/64 | 17/64 | 3/16 | 1/4 | 2-5/8 |
| CB-15 | 5/32 | 19/64 | 3/16 | 1/4 | 2-3/4 |
| CB-17 | 11/64 | 23/64 | 3/16 | 1/4 | 3-1/16 |
| CB-18 | 3/16 | 25/64 | 3/16 | 3/8 | 3-1/4 |
| CB-20 | 13/64 | 25/64 | 3/16 | 3/8 | 3-1/4 |
| CB-21 | 7/32 | 27/64 | 1/4 | 3/8 | 3-3/8 |
| CB-23 | 15/64 | 27/64 | 1/4 | 3/8 | 3-3/8 |
| CB-25 | 1/4 | 29/64 | 1/4 | 7/16 | 3-9/16 |
| CB-26 | 17/64 | 29/64 | 1/4 | 7/16 | 3-9/16 |
| CB-28 | 9/32 | 29/64 | 1/4 | 7/16 | 3-9/16 |
| CB-29 | 19/64 | 33/64 | 5/16 | 1/2 | 3-7/8 |
| CB-31 | 5/16 | 33/64 | 5/16 | 1/2 | 3-7/8 |
| CB-32 | 21/64 | 37/64 | 5/16 | 1/2 | 4-1/8 |
| CB-34 | 11/32 | 37/64 | 5/16 | 1/2 | 4-1/8 |
| CB-35 | 23/64 | 41/64 | 5/16 | 5/8 | 4-1/2 |
| CB-37 | 3/8 | 41/64 | 5/16 | 5/8 | 4-1/2 |
| CB-40 | 13/32 | 45/64 | 5/16 | 5/8 | 4-3/4 |
| CB-43 | 7/16 | 45/64 | 5/16 | 5/8 | 4-3/4 |
| CB-46 | 15/32 | 49/64 | 5/16 | 5/8 | 5-1/8 |
| CB-50 | 1/2 | 49/64 | 5/16 | 5/8 | 5-1/8 |
| CB-56 | 9/16 | 53/64 | 5/16 | 5/8 | 5-3/8 |
| CB-62 | 5/8 | 57/64 | 5/16 | 5/8 | 5-5/8 |
| CB-68 | 11/16 | 61/64 | 5/16 | 5/8 | 5-7/8 |
| CB-75 | 3/4 | 1-1/64 | 5/16 | 5/8 | 6-1/4 |
| CB-87 | 7/8 | 1-9/64 | 5/16 | 3/4 | 6-1/4 |
| CB-90 | 1 | 1-17/64 | 5/16 | 3/4 | 6-1/4 |



Sizes marked in blue print are due to be discontinued. Call for availability.