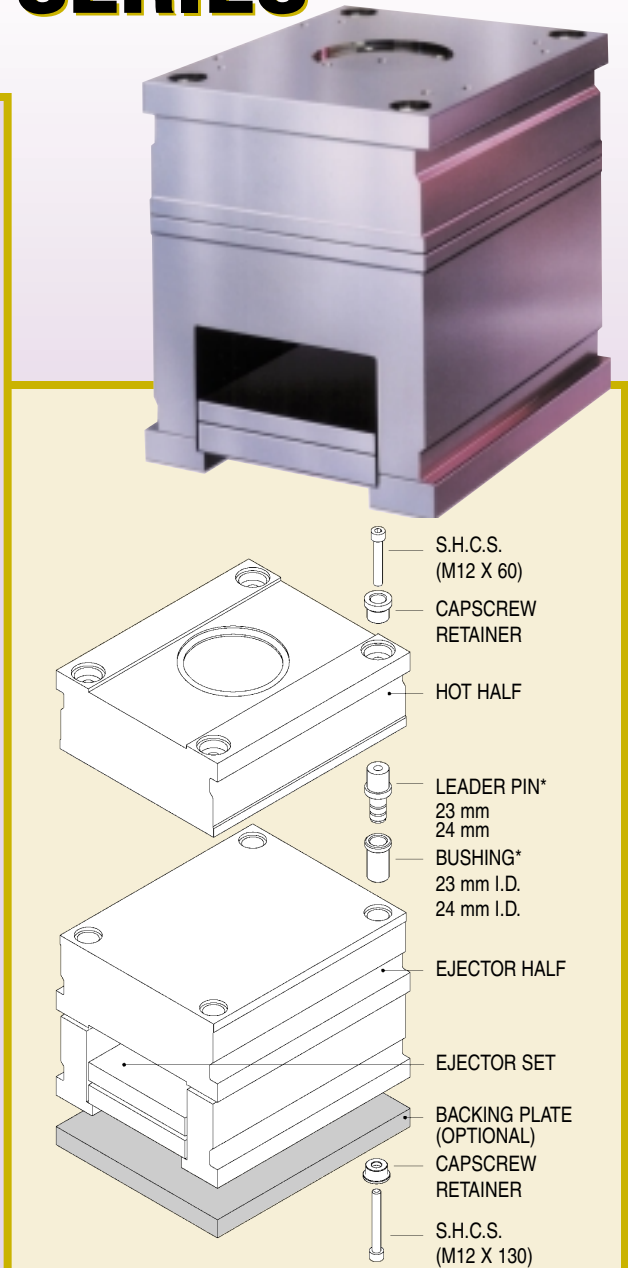
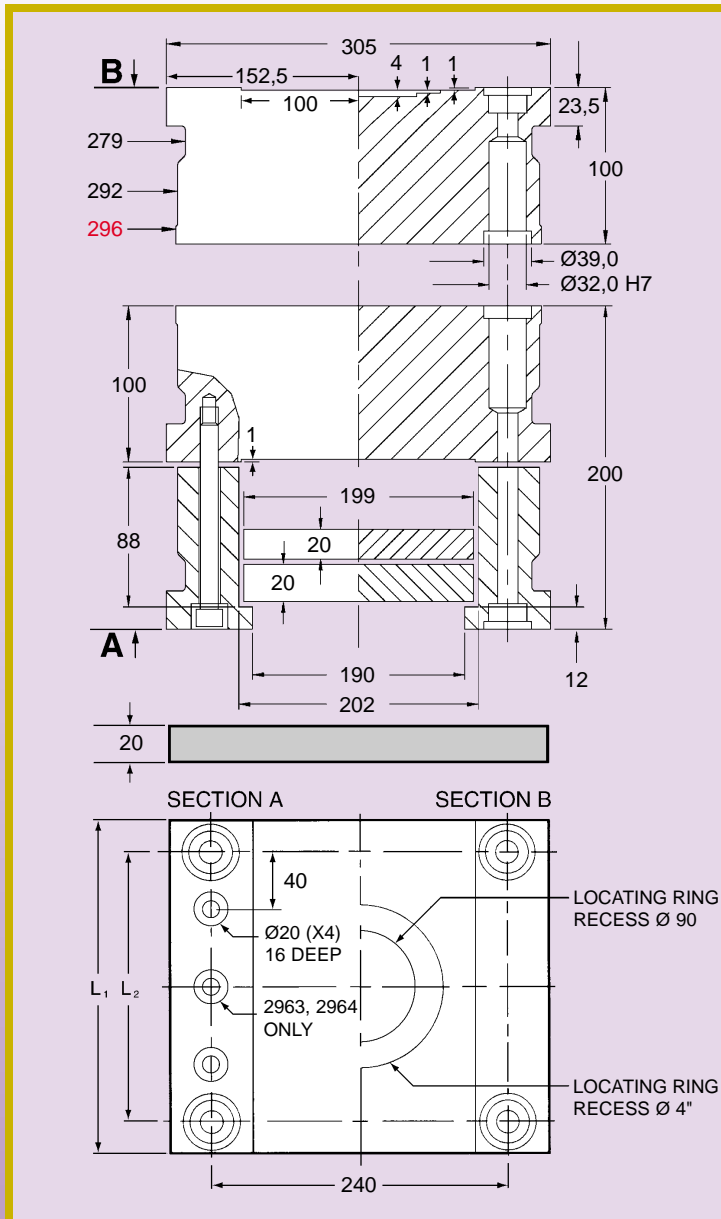




# QUICKSET ALUMINUM MOLD BASES 296 SERIES



CATALOG NUMBER	$L_1$	$L_2$	BACKING PLATE	APPROX. NET WEIGHT	
				kg	lb.
A2961	296	240	BP2961	72	159
A2962	396	340	BP2962	102	225
A2963	496	440	BP2963	123	271
A2964	596	540	BP2964	144	318

\* QUICKSET mold bases do not offset a leader pin and bushing assembly. **One set** of leader pins and bushings provided with this mold kit will be **23 mm** diameter or **24 mm** diameter. Mating of the diameters should be checked prior to final assembly.

ITEM	CATALOG NO.
CAPSCREW RETAINER	CR296
LEADER PIN - 23 mm	LP296-23
LEADER PIN - 24 mm	LP296-24
BUSHING - 23 mm	BU296-23
BUSHING - 24 mm	BU296-24

MANUFACTURED BY:

**ALMO**  
www.almo.uk.com