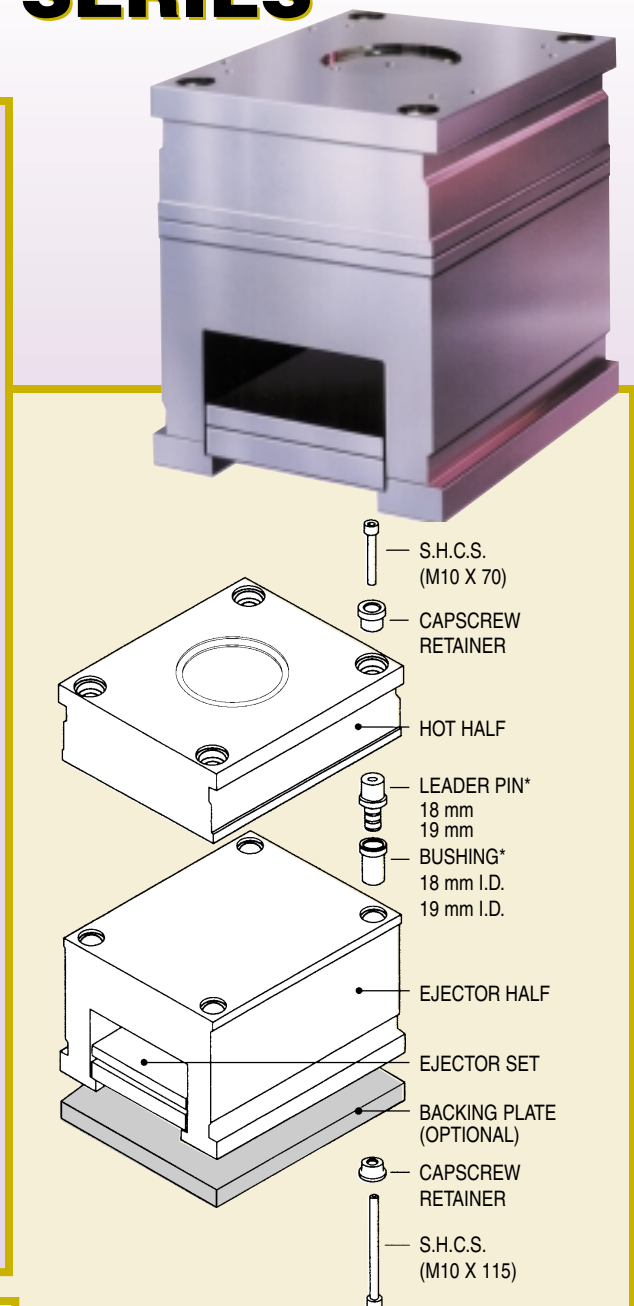
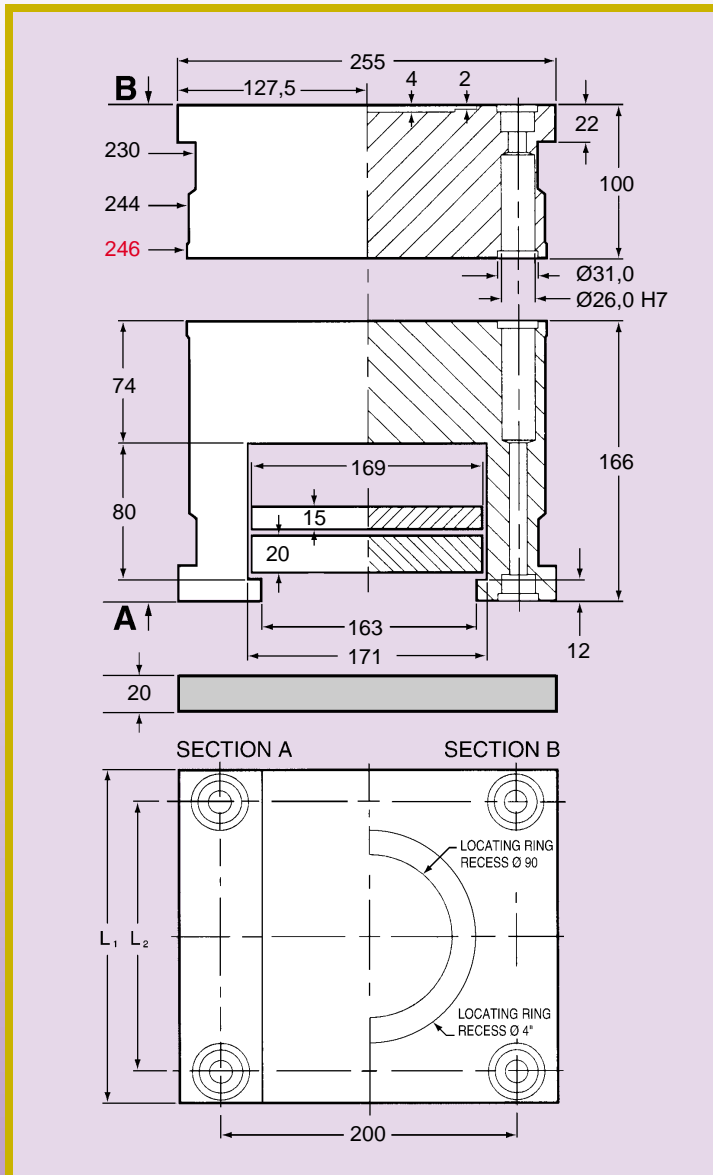




# QUICKSET ALUMINUM MOLD BASES 246 SERIES



CATALOG NUMBER	L <sub>1</sub>	L <sub>2</sub>	BACKING PLATE	APPROX. NET WEIGHT	
				kg	lb.
A2461	246	200	BP2461	32	71
A2462	296	250	BP2462	40	88
A2463	346	300	BP2463	49	108
A2464	396	350	BP2464	57	126
A2465	446	400	BP2465	65	143
A2466	496	450	BP2466	73	161
A2467	546	500	BP2467	81	179

\* QUICKSET mold bases do not offset a leader pin and bushing assembly. **One set** of leader pins and bushings provided with this mold kit will be **18 mm diameter or 19 mm diameter**. Mating of the diameters should be checked prior to final assembly.

ITEM	CATALOG NO.
CAPSCREW RETAINER	CR246
LEADER PIN - 18 mm	LP246-18
LEADER PIN - 19 mm	LP246-19
BUSHING - 18 mm	BU246-18
BUSHING - 19 mm	BU246-19

- When installing leader pins and bushings into the mold, it is advised that the press fit be lubricated. This will eliminate the potential bonding of the aluminum to the steel when pressure is applied.
- CAD files are available from the Almo web site or on CD from DMS.