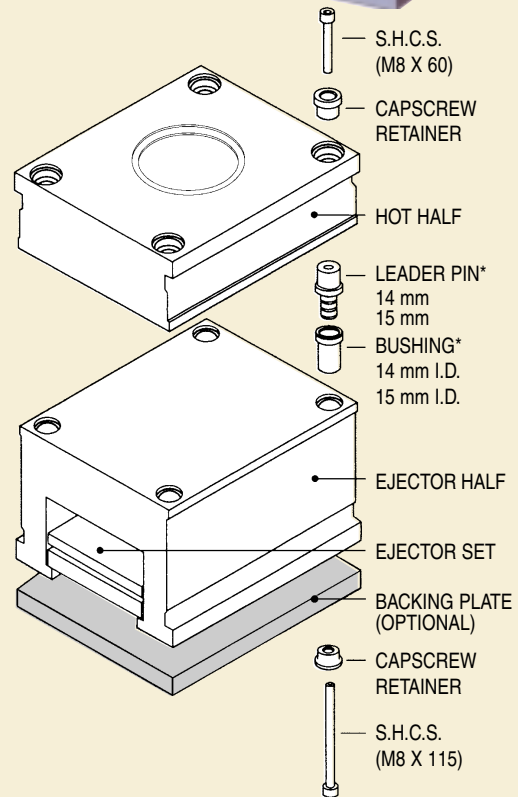
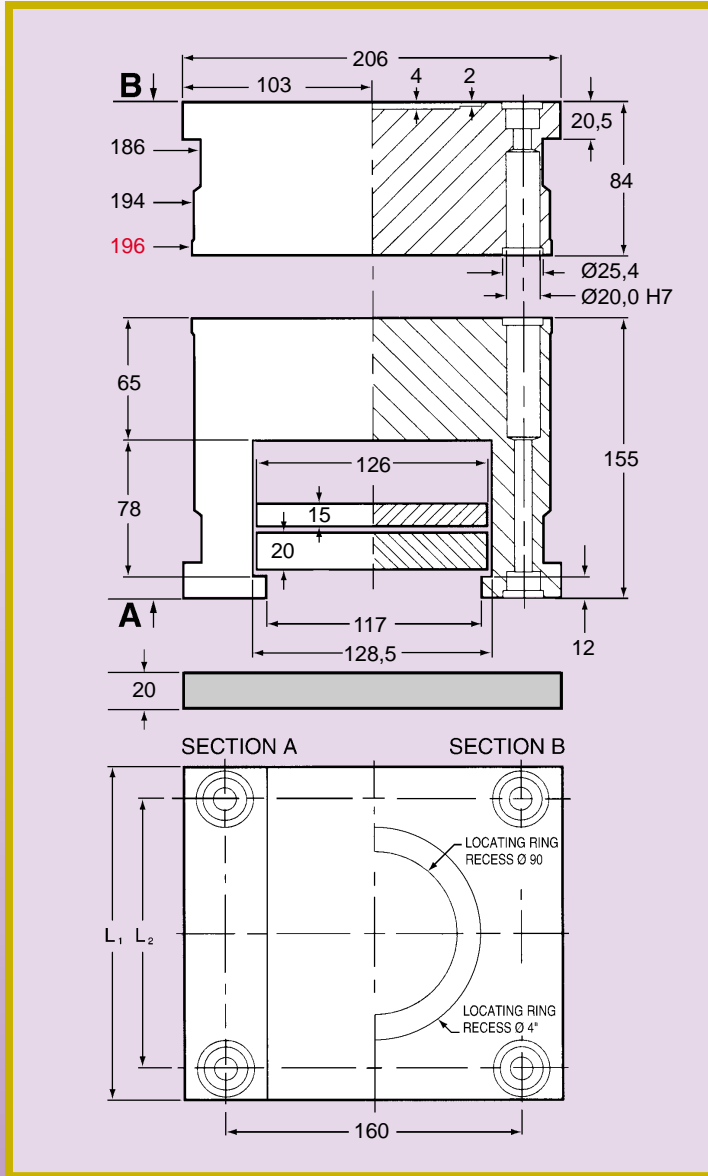




QUICKSET ALUMINUM MOLD BASES 196 SERIES



CATALOG NUMBER	L ₁	L ₂	BACKING PLATE	APPROX. NET WEIGHT	
				kg	lb.
A1961	196	160	BP1961	20	44
A1962	246	210	BP1962	24	53
A1963	296	260	BP1963	28	62
A1964	346	310	BP1964	32	71
A1965	396	360	BP1965	36	79
A1966	446	410	BP1966	40	88
A1967	496	460	BP1967	44	97

- The heat transfer characteristics of aluminum promotes faster cycle times.
- Quicksets can be ground, welded and textured.
- When reaming holes, especially small diameters in aluminum, it is advised to be oversize by +.01 mm to +.02 mm.

* QUICKSET mold bases do not offset a leader pin and bushing assembly. **One set** of leader pins and bushings provided with this mold kit will be **14 mm diameter or 15 mm diameter**. Mating of the diameters should be checked prior to final assembly.

ITEM	CATALOG NO.
CAPSCREW RETAINER	CR196
LEADER PIN - 14 mm	LP196-14
LEADER PIN - 15 mm	LP196-15
BUSHING - 14 mm	BU196-14
BUSHING - 15 mm	BU196-15