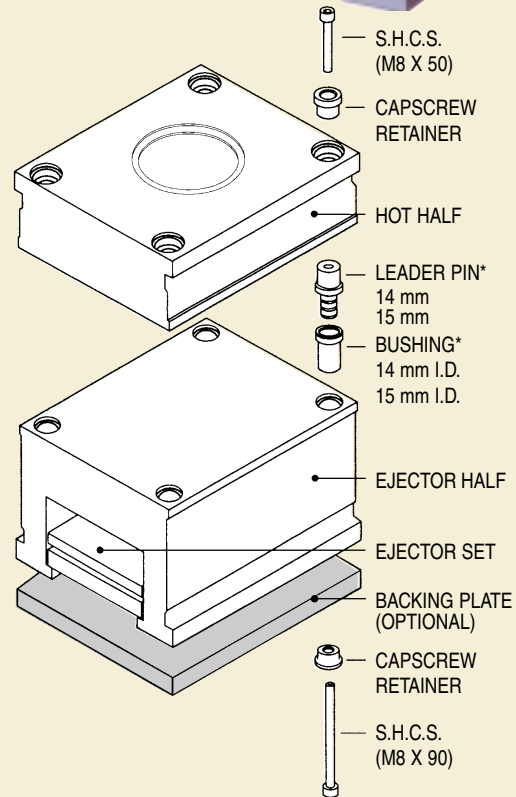
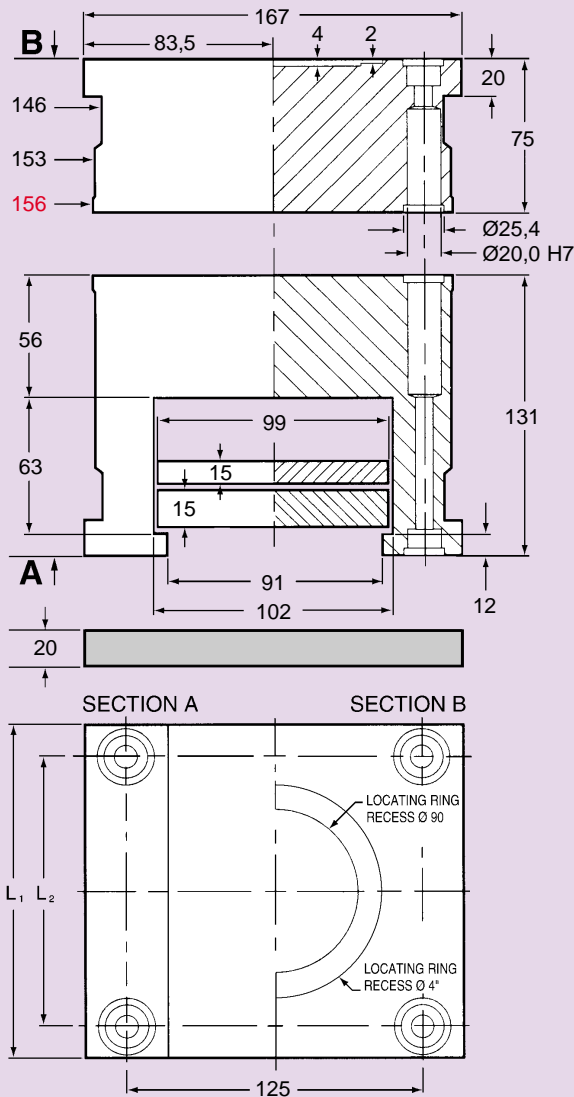




QUICKSET ALUMINUM MOLD BASES 156 SERIES



CATALOG NUMBER	L ₁	L ₂	BACKING PLATE	APPROX. NET WEIGHT	
				kg	lb.
A1561	156	120	BP1561	16	35
A1562	196	160	BP1562	19	42
A1563	246	210	BP1563	23	51
A1564	296	260	BP1564	26	57
A1565	346	310	BP1565	29	64
A1566	396	360	BP1566	31	68

- Quickset aluminum molds are 1/3 the density of steel molds.
- Handling is easier and freight costs can be significantly reduced.
- Machining, EDM and polishing are considerably faster.
- Using electrodes with reduced current and spark gap will result in improved surface finishes.

* QUICKSET mold bases do not offset a leader pin and bushing assembly. **One set** of leader pins and bushings provided with this mold kit will be **14 mm diameter or 15 mm diameter**. Mating of the diameters should be checked prior to final assembly.

ITEM	CATALOG NO.
CAPSCREW RETAINER	CR156
LEADER PIN - 14 mm	LP156-14
LEADER PIN - 15 mm	LP156-15
BUSHING - 14 mm	BU156-14
BUSHING - 15 mm	BU156-15