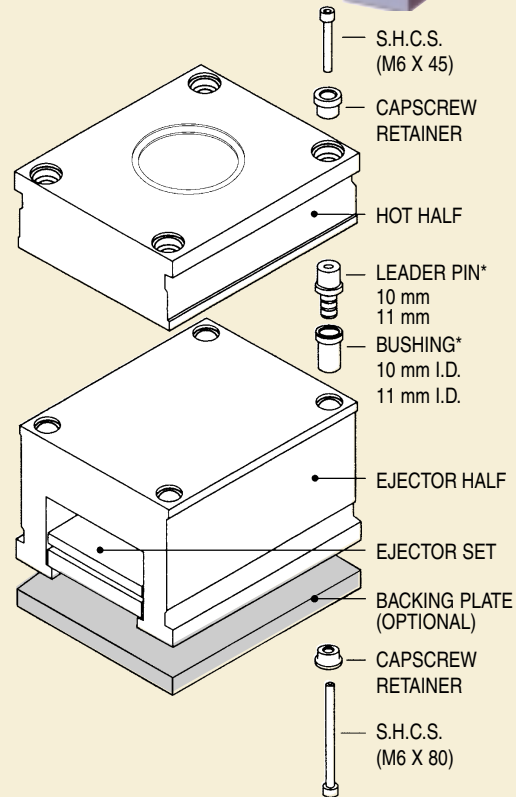
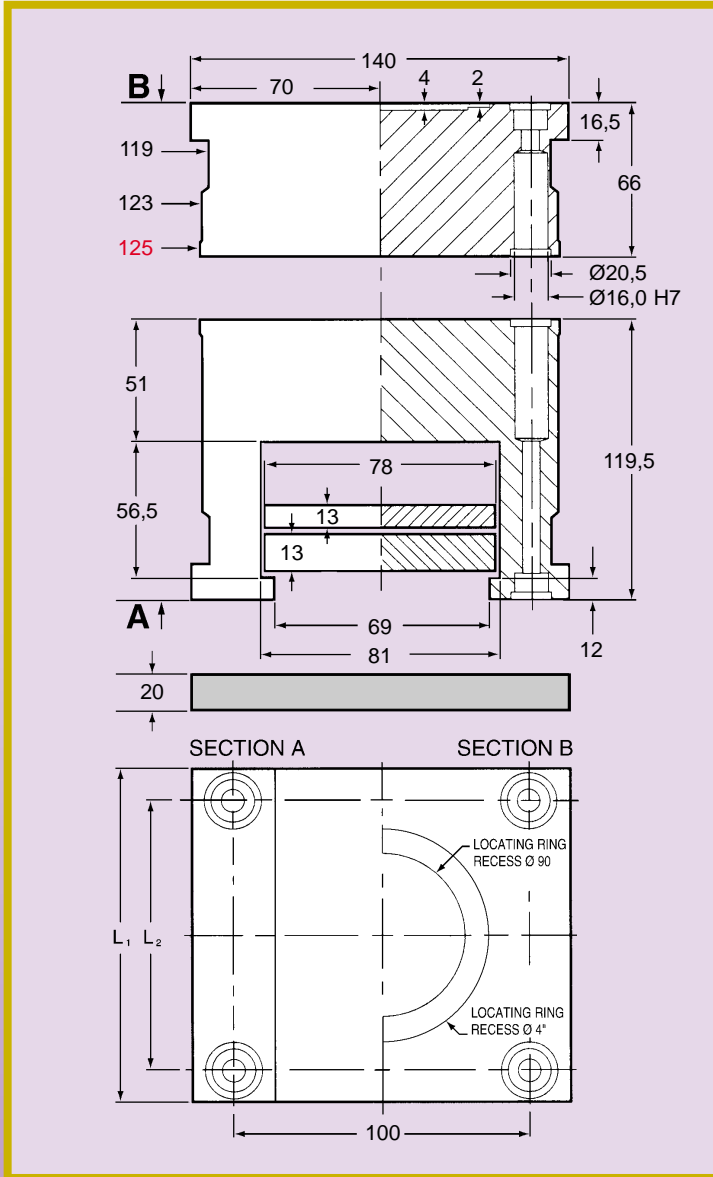




# QUICKSET ALUMINUM MOLD BASES 125 SERIES



CATALOG NUMBER	L <sub>1</sub>	L <sub>2</sub>	BACKING PLATE	APPROX. NET WEIGHT	
				kg	lb.
A1251	125	94	BP1251	12	26
A1252	156	125	BP1252	14	31
A1253	196	165	BP1253	16	35
A1254	246	215	BP1254	18	40
A1255	296	265	BP1255	22	49

Material: HD .87-7022 T651  
 Tensile strength: 490-530 N/sq mm  
 Hardness: 150 HB  
 Quicksets are supplied fully machined with four leader pins, bushings, capscrew retainers, capscrews and ejector set.  
 NOTE: Quicksets are supplied unassembled.

\* QUICKSET mold bases do not offset a leader pin and bushing assembly. **One set** of leader pins and bushings provided with this mold kit will be **10 mm diameter or 11 mm diameter**. Mating of the diameters should be checked prior to final assembly.

ITEM	CATALOG NO.
CAPSCREW RETAINER	CR125
LEADER PIN - 10 mm	LP125-10
LEADER PIN - 11 mm	LP125-11
BUSHING - 10 mm	BU125-10
BUSHING - 11 mm	BU125-11