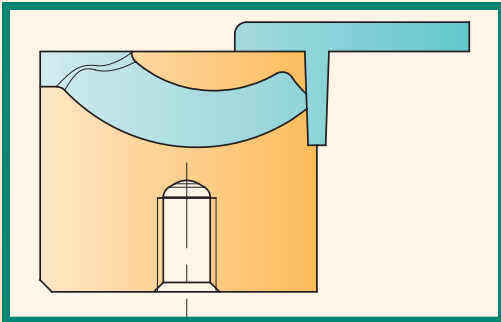
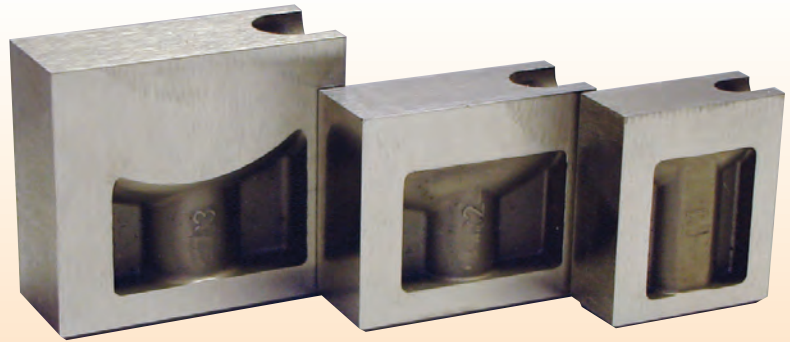




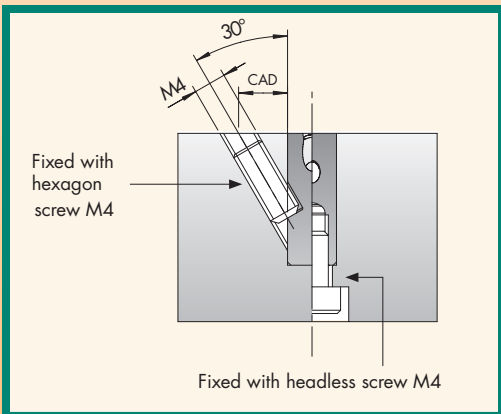
SGC Cashew Gate Inserts

Side Gate Contourable

- Curved tunnel permits getting deep inside the part
- Integrated dead-end recess reduces loss of pressure and shear stress
- Highly wear-resistant hot working steel M2 (1.3343) – 54+2 HRC



SGC-XS / SGC-S Mounting Possibilities



SGC

	SGC-XS	SGC-S	SGC-1	SGC-2	SGC-3
GATE POINT	0,4 - 0,8	0,4 - 1,0	0,6 - 1,4	0,8 - 2,1	~ Ø 1,1 -3,3
RUNNER	2,5	2,5	4	6	8
MAXIMUM SHOT WEIGHT					
NV	12	20	35	250	1000
MV	7	12	25	120	500
HV	5	8	15	90	300

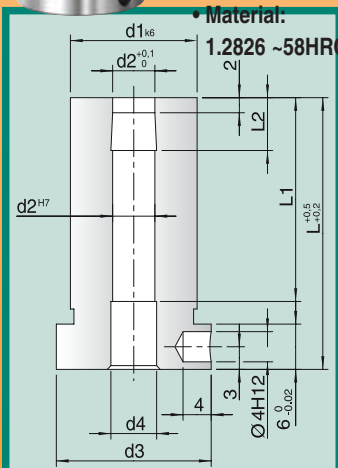
NV = low viscosity / MV = medium viscosity / HV = high viscosity

Cat. No.	b	b1	b2 max.	d3	h	h1 max.	h2	h3	l1	l2	M
SGC-XS	10	5	1.1	2.5	12	0.6	1.9	2.0	5	3.2	4
SGC-S	15	6	2.0	2.5	18	2	3.5	4.0	8	4	4
SGC-1	18	8	1.8	4	22	2	3.5	4.1	9	5.2	5
SGC-2	25	10	2.5	6	22	2.5	4.8	5.7	8	6.5	5
SGC-3	30	12	2.8	8	27	4.5	7.5	8.4	9	7	6

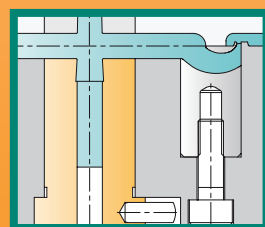
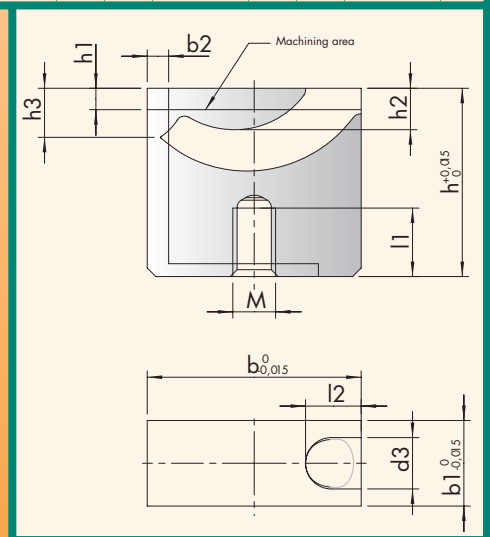


NEW

Retaining Bush For Use With Cashew Gate Inserts



CAT. NO.	L	L1	L2	d1	d2	d3	d4
RB4-36	36	36					
RB4-46	46		7	12	4	16	4.5
RB4-56	56	46					
RB6-36	36	36					
RB6-46	46	46					
RB6-56	56		7	18	6	22	6.5
RB6-66	66	56					
RB8-46	46	46					
RB8-56	56	56	9.5	24	8	28	8.5
RB8-66	66	66					



CAD files available at:



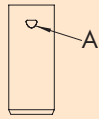


SGC Cashew Gate Inserts

Side Gate Contourable

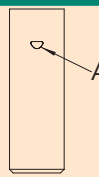
SGC-SX

A (mm)	~O (mm)	b2 (mm)
0.13	0.4	0.9
0.3	0.6	1.0
0.53	0.8	1.1



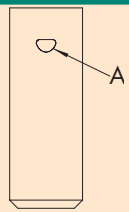
SGC-S

A (mm)	~O (mm)	b2 (mm)
0.15	0.4	1.7
0.33	0.6	1.8
0.55	0.8	1.9
0.79	1.0	2.0



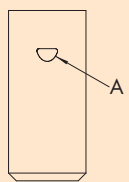
SGC-1

A (mm)	~O (mm)	b2 (mm)
0.28	0.6	1.4
0.53	0.8	1.5
0.82	1	1.6
1.15	1.2	1.7
1.52	1.4	1.8



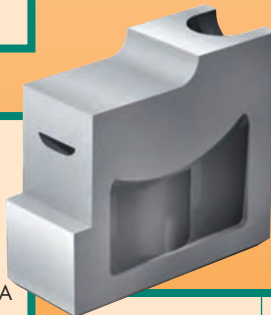
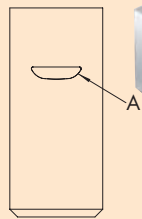
SGC-2

A (mm)	~O (mm)	b2 (mm)
0.28	0.6	1.7
0.54	0.8	1.8
0.84	1	1.9
1.2	1.2	2
1.57	1.4	2.1
2	1.6	2.2
2.43	1.75	2.3
2.9	1.9	2.4
3.4	2.1	2.5



SGC-3

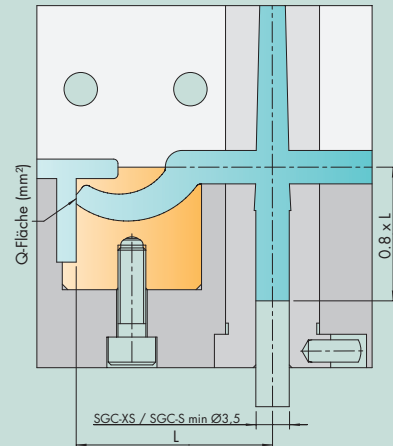
A (mm)	~O (mm)	b2 (mm)
1	1.1	2
1.75	1.5	2.1
2.56	1.8	2.2
3.43	2.1	2.3
4.35	2.35	2.4
5.32	2.6	2.5
6.33	2.85	2.6
7.38	3	2.7
8.48	3.3	2.8



Thermoplastic elastomers (TPE)

- Low Shore hardness = shorter distance L
- Use centring pin
- Max. hardness 100 Shore A

Standard installation for shallow and medium contour depths



Special installation for deep contours

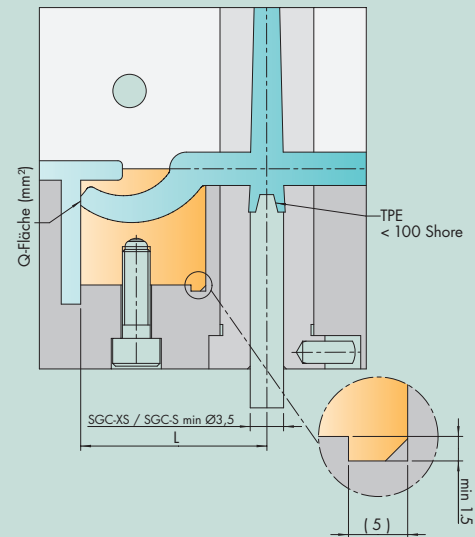


Table for distance L

Catalog Number	Material Type			
	TPE, TPU, etc.	PE, PP, PET etc.	PC/ABS, PA, POM, HI-PC, etc.	PA+GF, PC, SAN, PMMA, etc.
SGC-XS	12-16	13-20	16-23	22-29
SGC-S	16-21	18-25	21-28	27-34
SGC-1	21-26	26-34	31-39	36-45
SGC-2	28-33	31-39	36-44	41-50
SGC3	33-38	38-48	43-53	48-58